



WELLS + ASSOCIATES

# THE RIVER SCHOOL COMMUNITY MEETING #2

Transportation Presentation

July 1, 2021

**THIS MEETING IS BEING RECORDED**

# Purpose of Today's Meeting

Review improvements proposed by the River School to mitigate traffic impacts and garner feedback from the community on the proposed improvements.

# Overview

- Overview of Methodology
- Results of Analysis
- Proposed Improvements
- Q+A

# Overview of Methodology

- Traffic analysis conducted in accordance with DDOT guidelines and requirements
- Study was scoped with DDOT
  - DDOT approved a study area with 10 intersections
  - Based on community input, we agreed to study 18 intersections
- Traffic Count Methodology

# Existing Conditions

- Most AM and PM Commuter peak period traffic counts conducted in February 2020
  - Historical AM and PM Commuter peak period traffic counts were used for remaining intersections and factored to 2020
  - Counts were conducted for a three-hour period in the AM and PM, and the single highest hour within the window was used for analysis
- Pre-pandemic PM School peak period traffic counts not available
  - PM School peak period counts conducted in May
  - AM peak period also recounted in May
  - Adjustment factors were developed to account for non-pandemic conditions by comparing AM counts conducted before and during pandemic
  - PM School peak hour traffic counts were adjusted to account for non-pandemic conditions

# Overview of Methodology

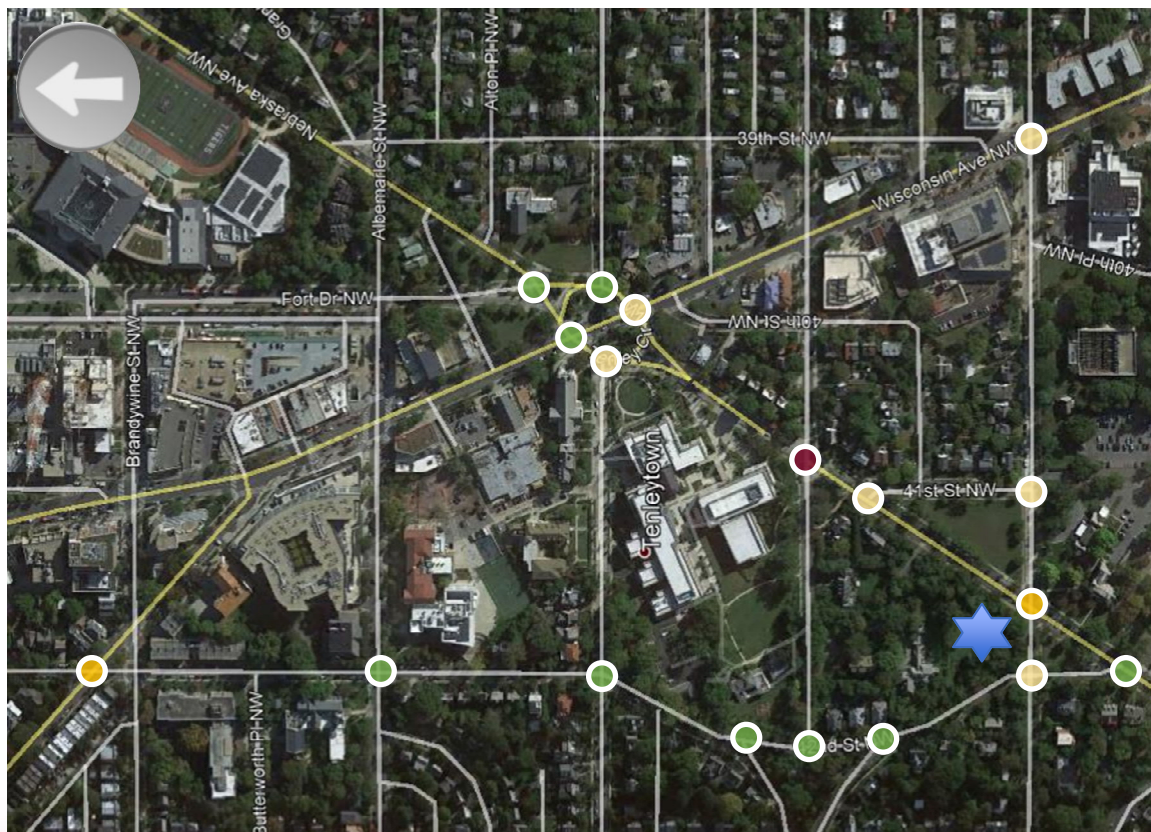
- Existing Conditions
- Future Conditions without River School
  - Regional Growth
  - Nearby Planned/Approved Projects (7 projects identified)
- Future Conditions with River School
- Identify Adverse Impacts
- Recommend Improvements to Mitigate Impact

# What Constitutes an Adverse Impact?

- If site traffic causes an intersection approach or overall intersection to drop to a LOS E or LOS F
- For intersections that operate at LOS E or F without the proposed development, if the delay increases by more than 5% due to site traffic
- If site traffic causes the 95<sup>th</sup> percentile queue to increase by 150' or more
- If site traffic causes the 95<sup>th</sup> percentile queue to exceed the available storage length



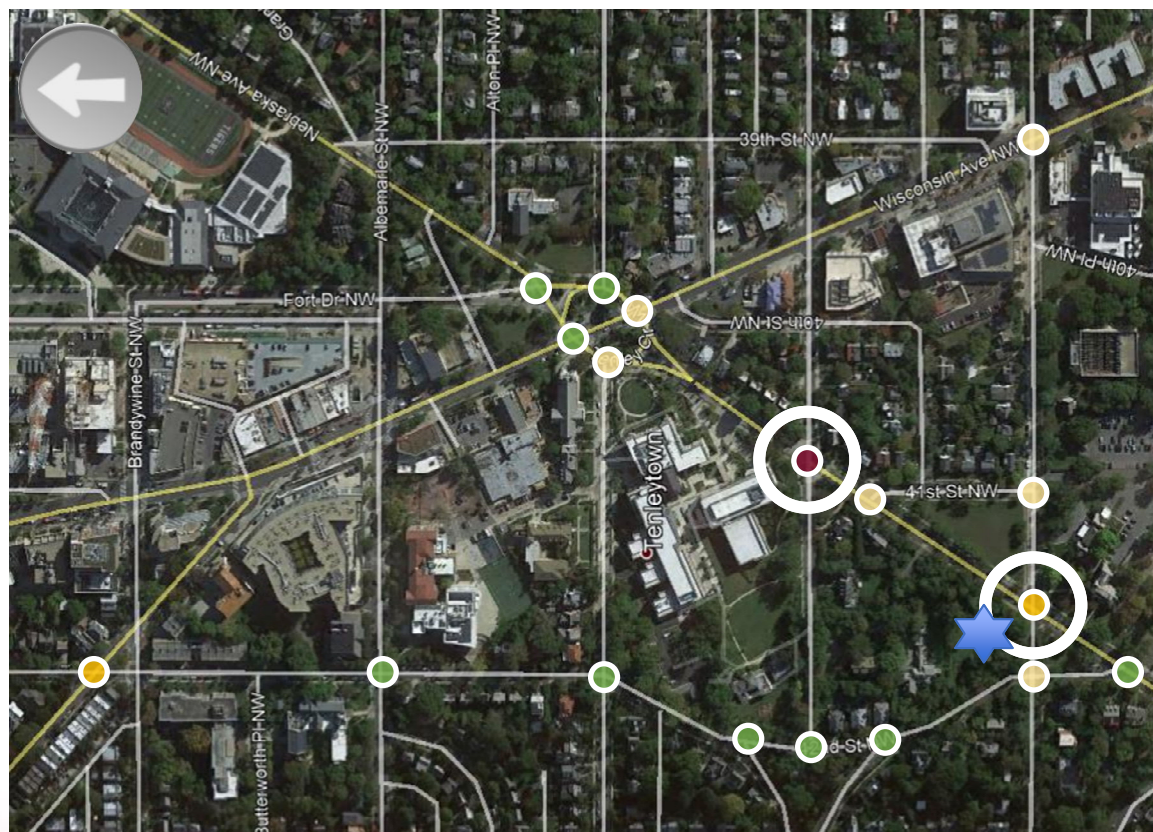
# Results of Analysis – Identification of Impacts



- No Impact
- Impact during 1 peak hour
- Impact during 2 peak hours
- Impact during 3 peak hours
- ★ Project Location



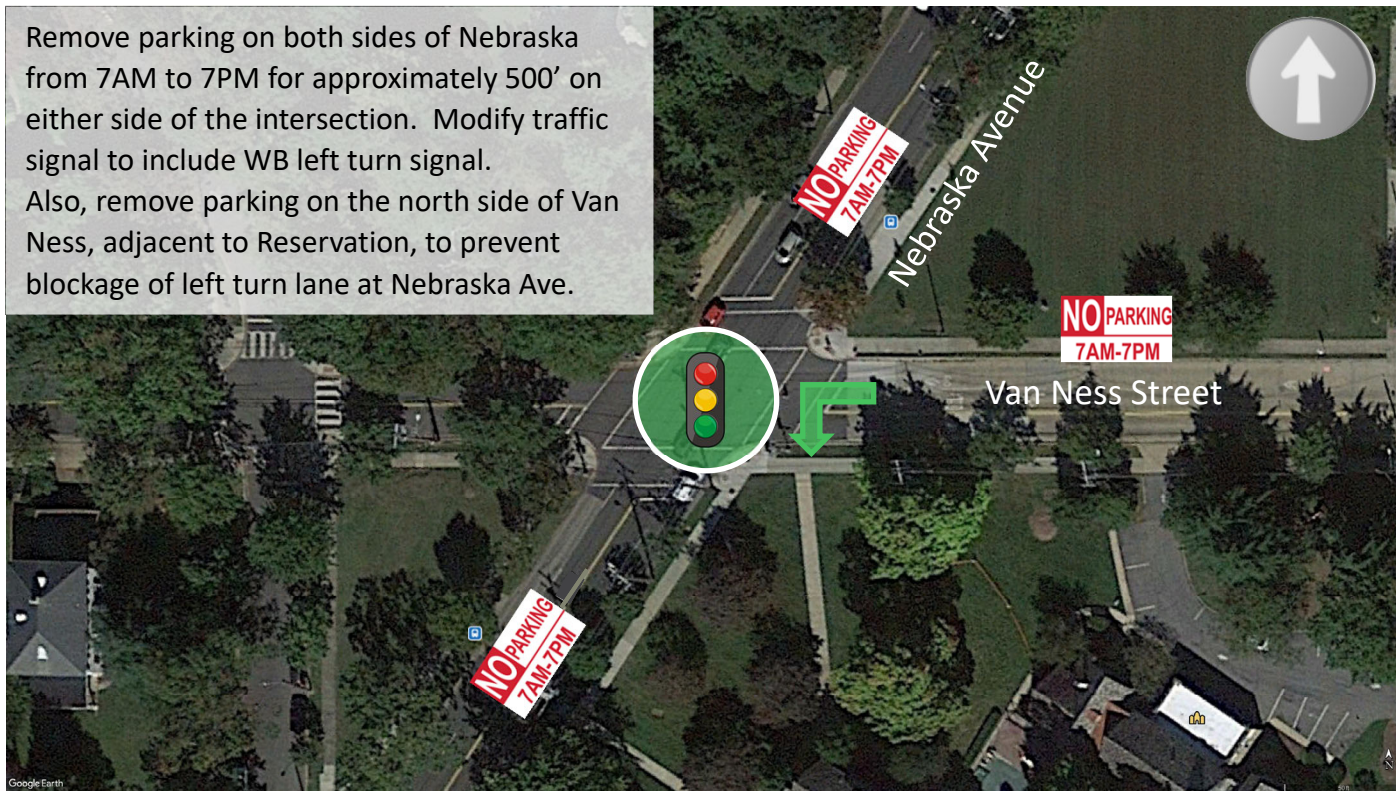
# Results of Analysis – Identification of Impacts



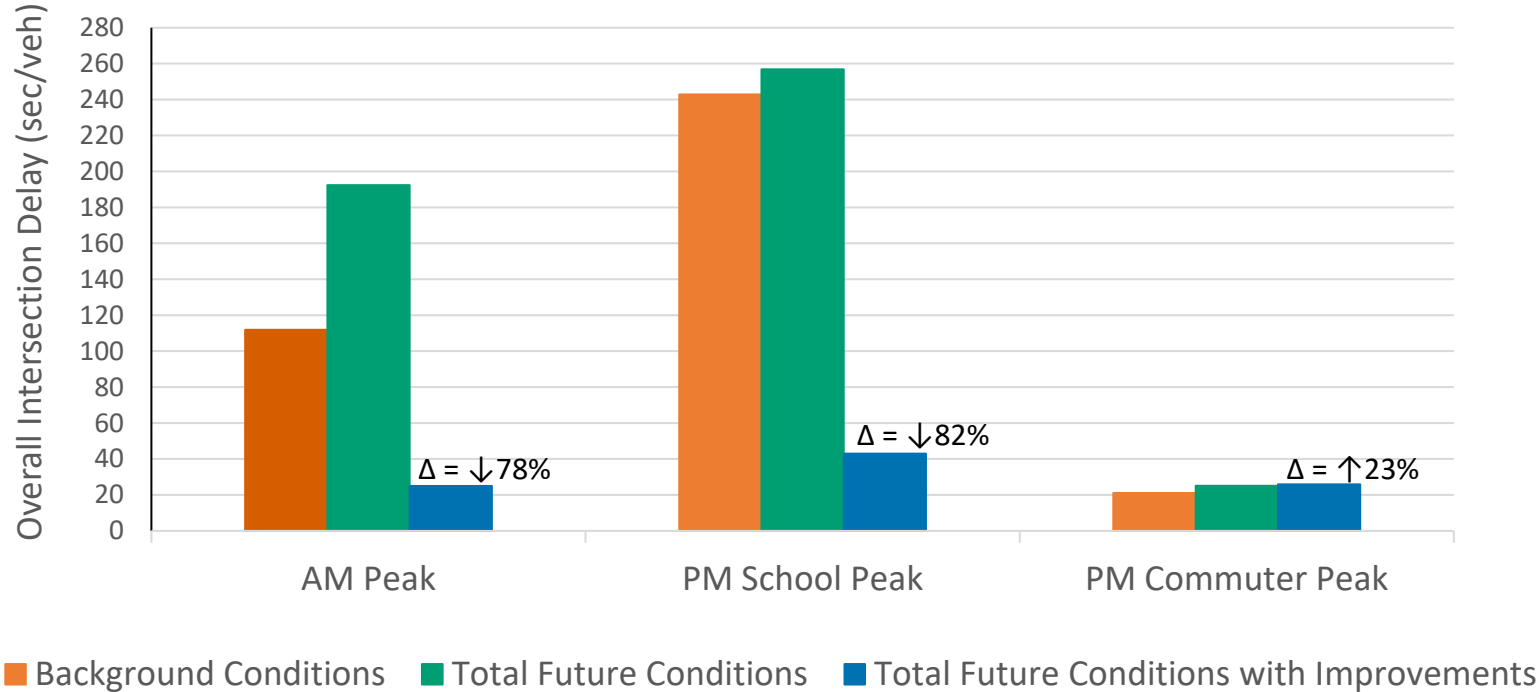
- No Impact
- Impact during 1 peak hour
- Impact during 2 peak hours
- Impact during 3 peak hours
- ★ Project Location

# Proposed Improvements – Nebraska/Van Ness

Remove parking on both sides of Nebraska from 7AM to 7PM for approximately 500' on either side of the intersection. Modify traffic signal to include WB left turn signal. Also, remove parking on the north side of Van Ness, adjacent to Reservation, to prevent blockage of left turn lane at Nebraska Ave.



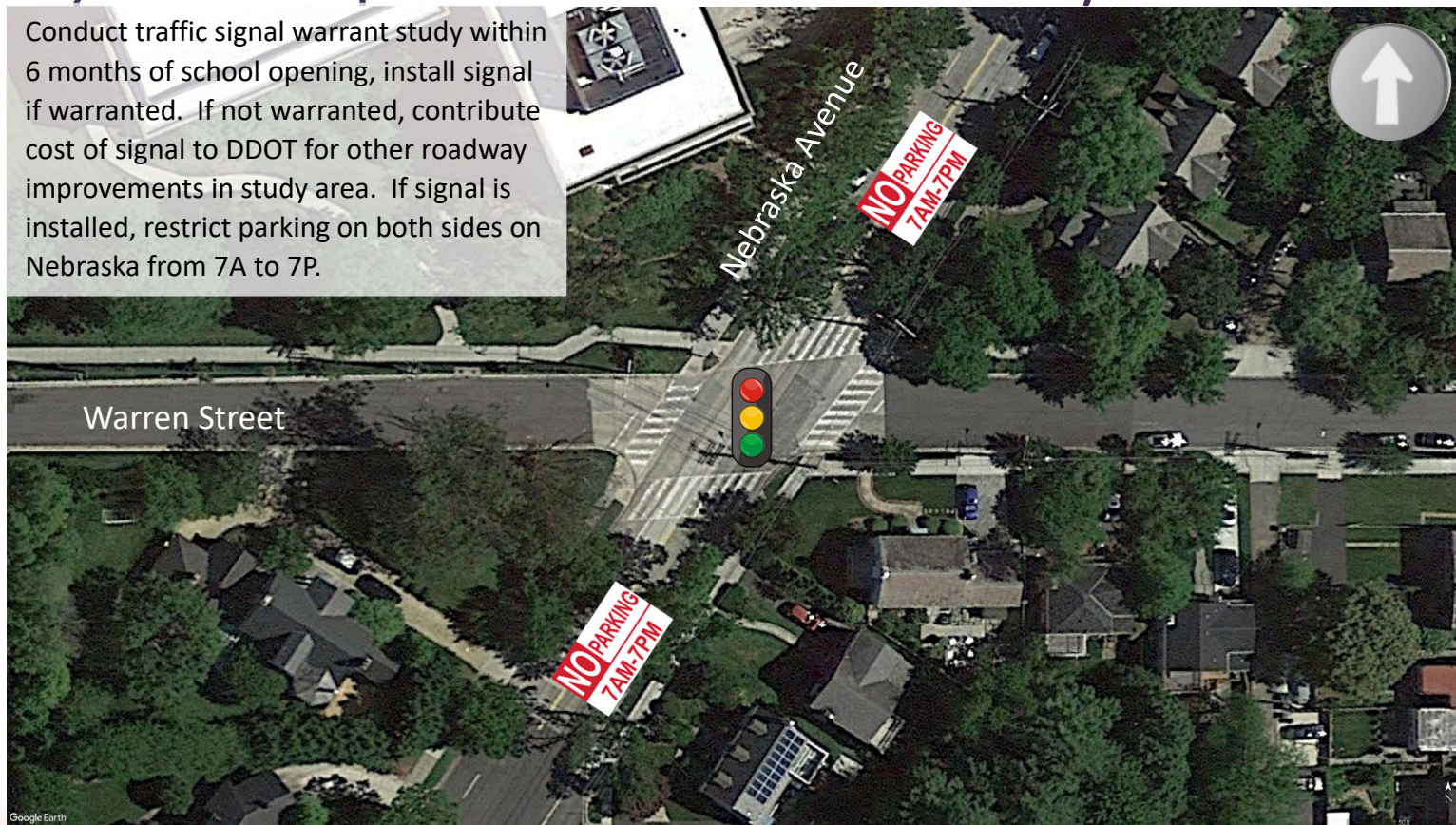
# Proposed Improvements – Nebraska/Van Ness



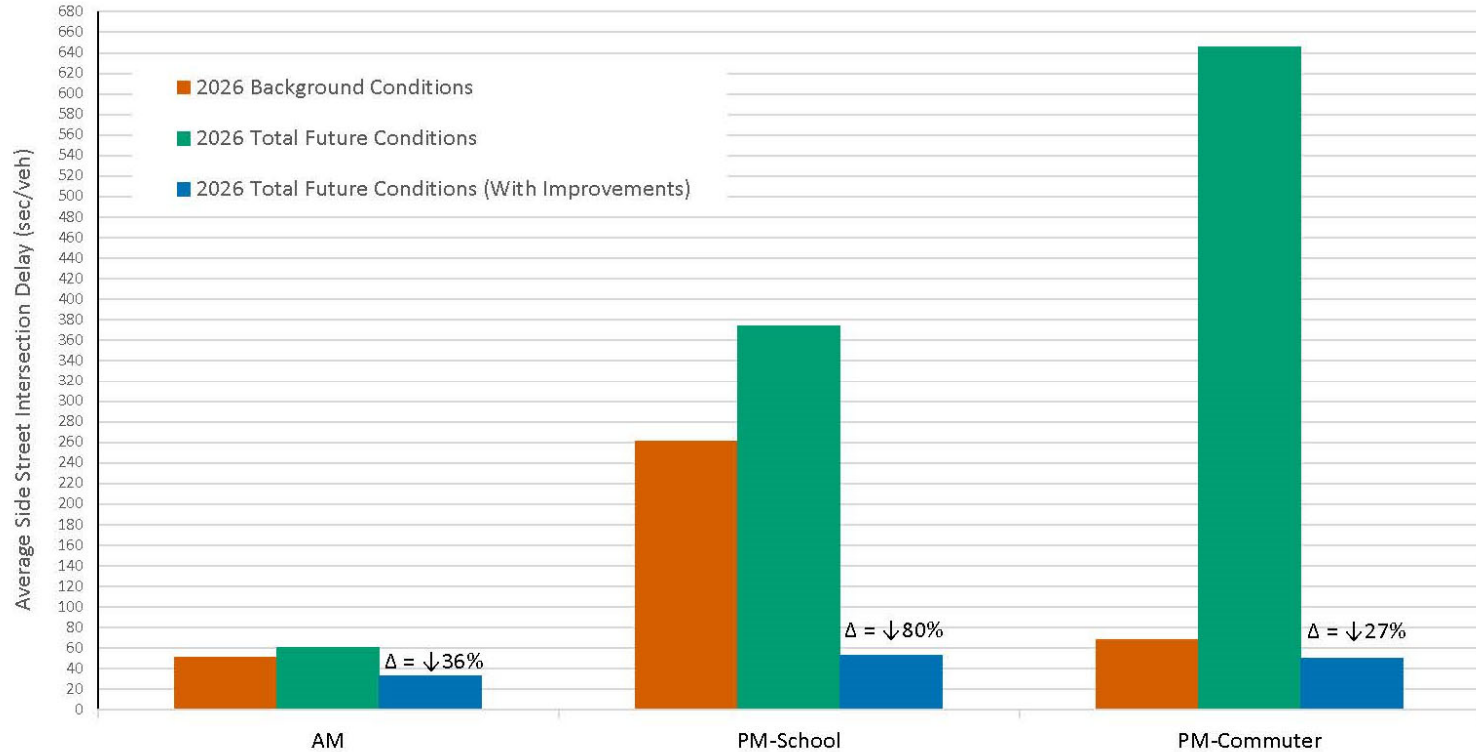


# Proposed Improvements – Nebraska/Warren

Conduct traffic signal warrant study within 6 months of school opening, install signal if warranted. If not warranted, contribute cost of signal to DDOT for other roadway improvements in study area. If signal is installed, restrict parking on both sides on Nebraska from 7A to 7P.



# Average Delay at Warren Street/Nebraska Avenue



# Questions?

Additional project resources, including the community input portal available, as well as a copy of this presentation and the video Zoom recording will be available at

<https://riverschool.net/proposed-new-campus/>

Thank you!